



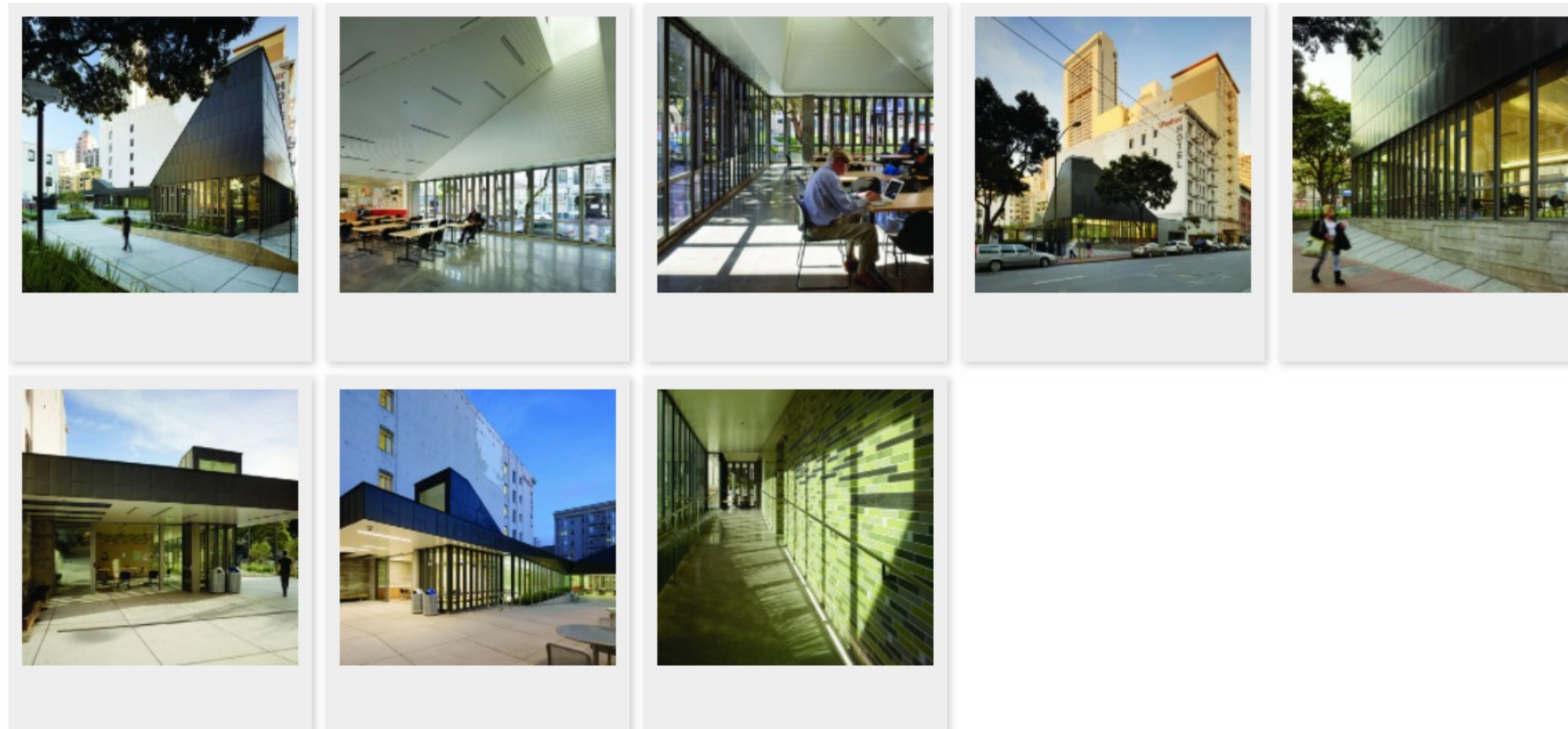
EHDD
THE LANDS END LOOKOUT AND VISITOR CENTER
2015 AIASF DESIGN AWARDS / MERIT AWARD / ARCHITECTURE
© MICHAEL DAVID ROSE PHOTOGRAPHY

Boeddeker Park

Honor Award

ARCHITECTURE

The Trust for Public Land, in partnership with the San Francisco Recreation and Parks Department, teamed with WRNS Studio to redesign and completely rebuild this one-acre park and clubhouse to meet the needs of the community for open space that supports a wide age-range of patrons. This new landmark park and clubhouse serves as a model of civic engagement, inspiration, resource conservation and adaptability.



Architect
WRNS Studio

Project Management
Swinerton Management & Consulting

Photographer
Matthew Millman Photography

Lighting
Interface Engineering

Mechanical, Electrical, and Plumbing
Interface Engineering

Structural Engineer
Deadalus Engineering

Civil Engineer
Sherwood Design Engineers

Landscape
The Trust for Public Land & John Northmore Roberts & Associates

Interior Architect
WRNS Studio

EGD
WRNS Studio

General Contractor
CLW Builders, Inc.

Geotechnical
Rutherford & Chekene

Competition
Design Awards 2015